

K&R Vintage Doll Patterns

KRVP5509 - Patterns

Girls Dress Circa 1928

Size 18" AG

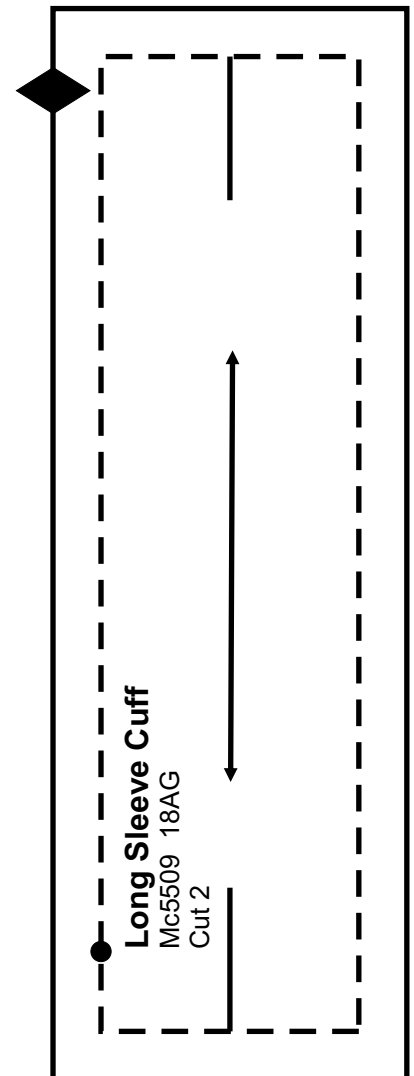
**Fits: 18" dolls such as, Mattel's American Girl,
Target's Our Generation Dolls and similar
cloth bodied dolls.**

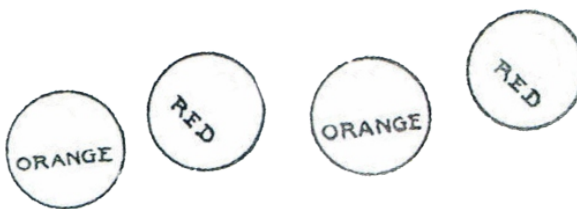
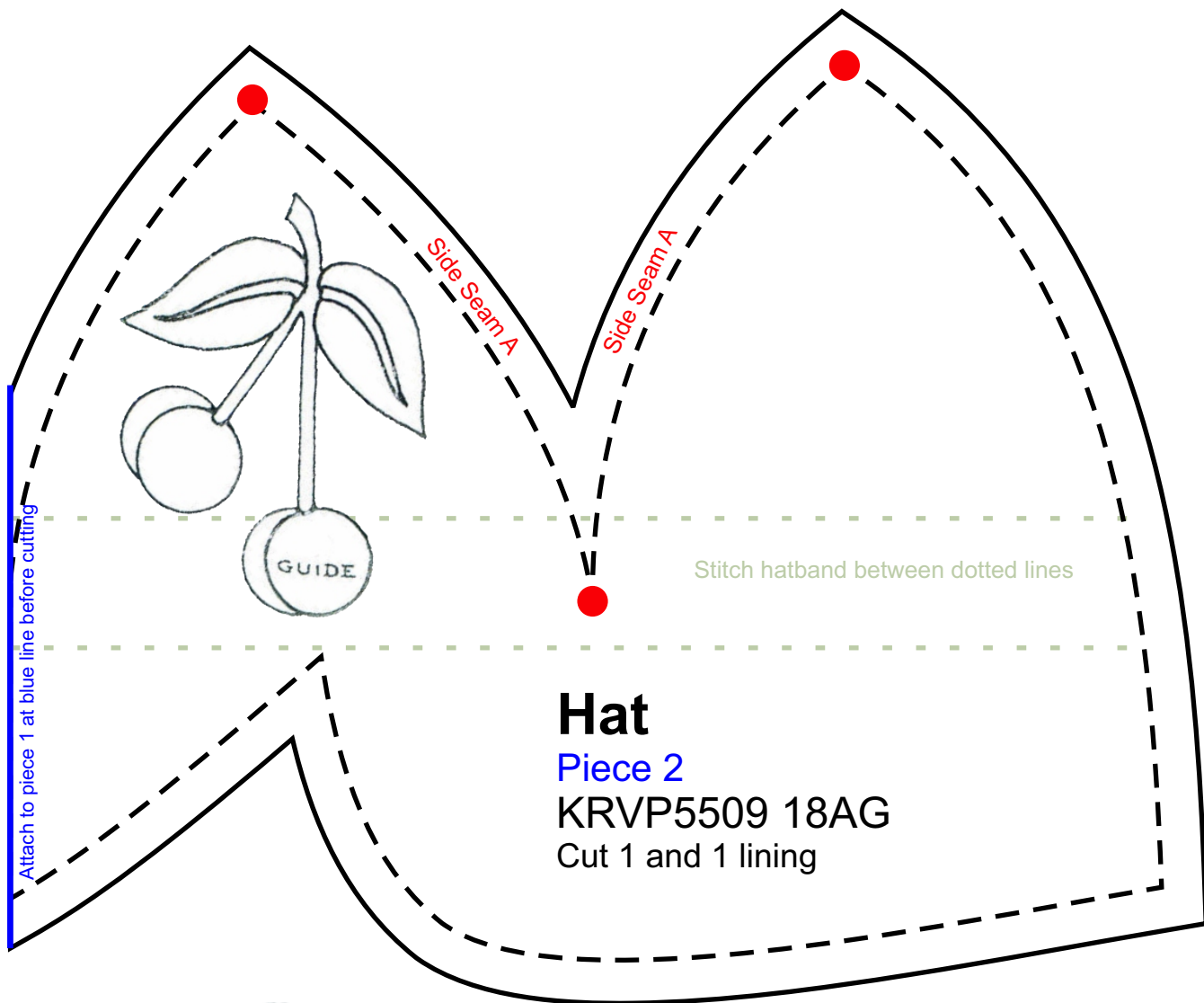
Printing the patterns:

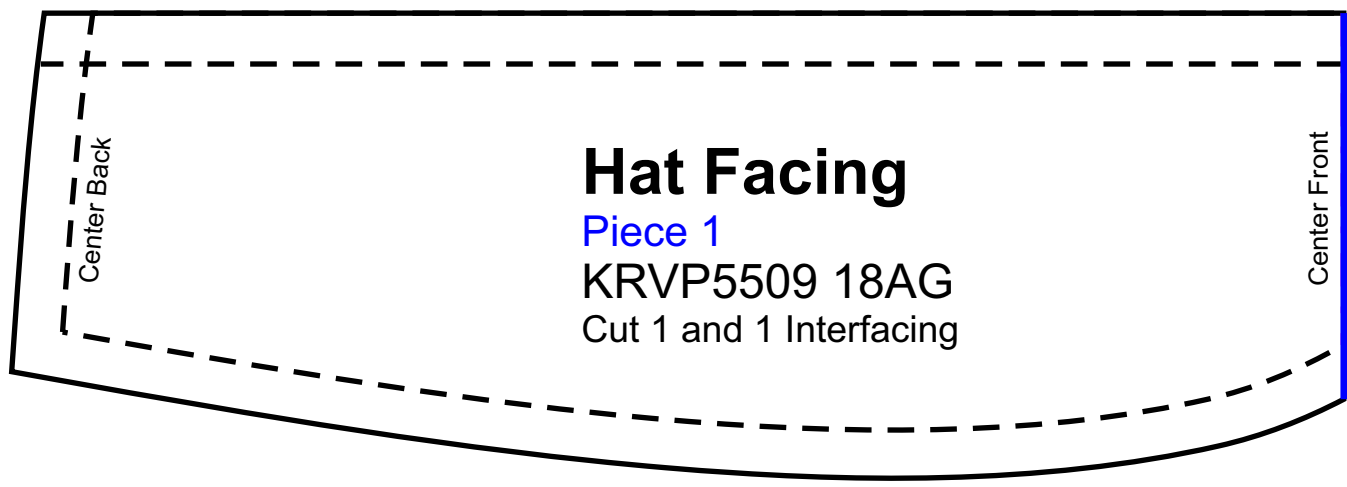
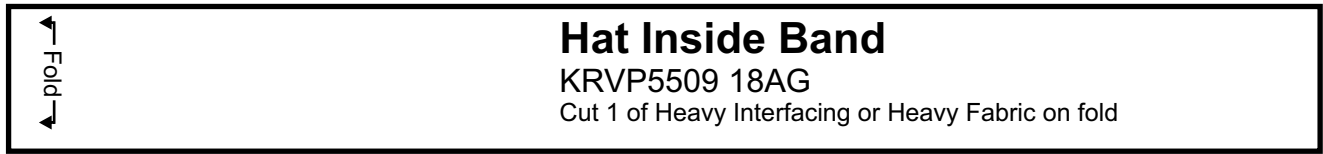
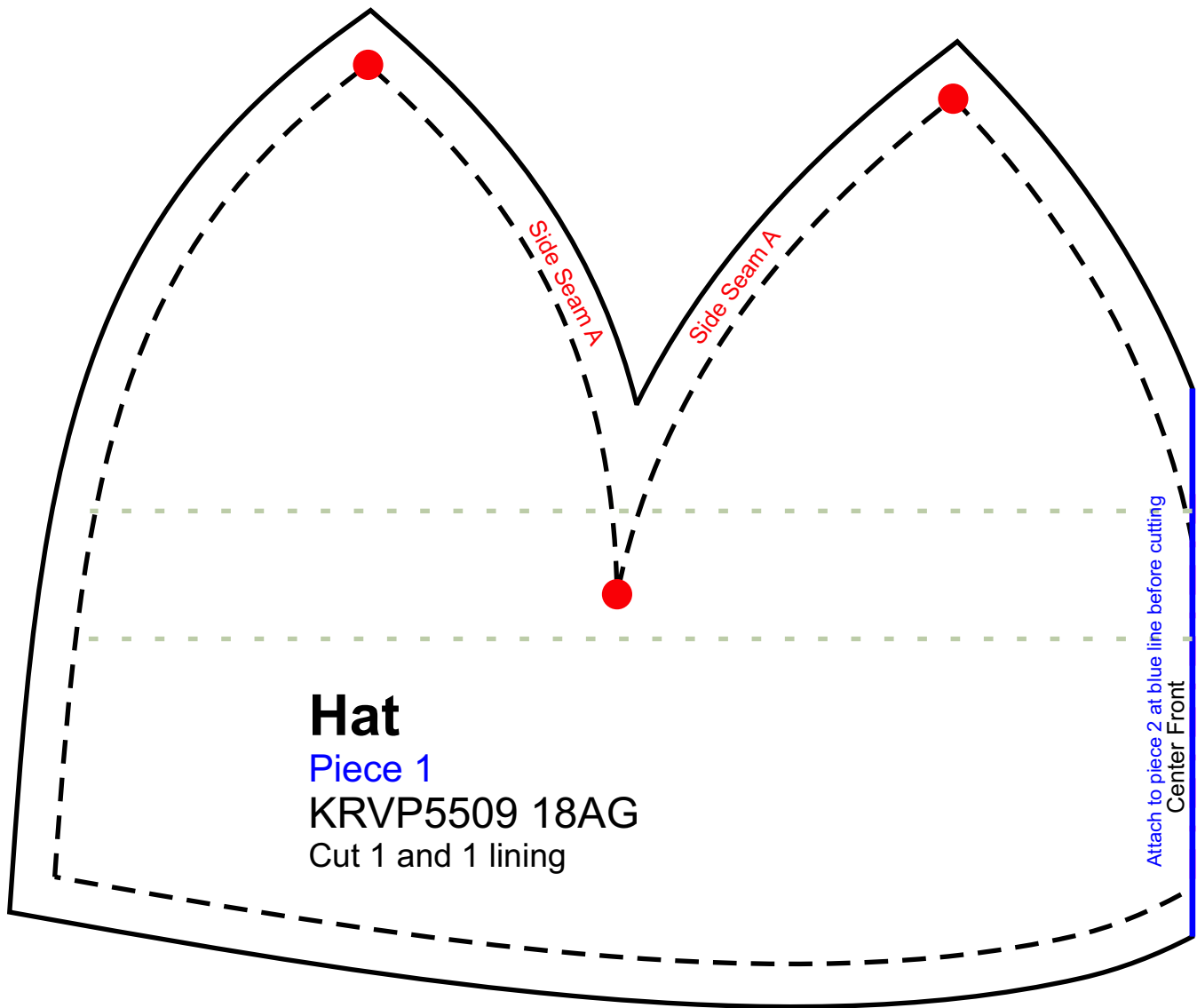
You will need Letter (8 1/2" x 11") paper.

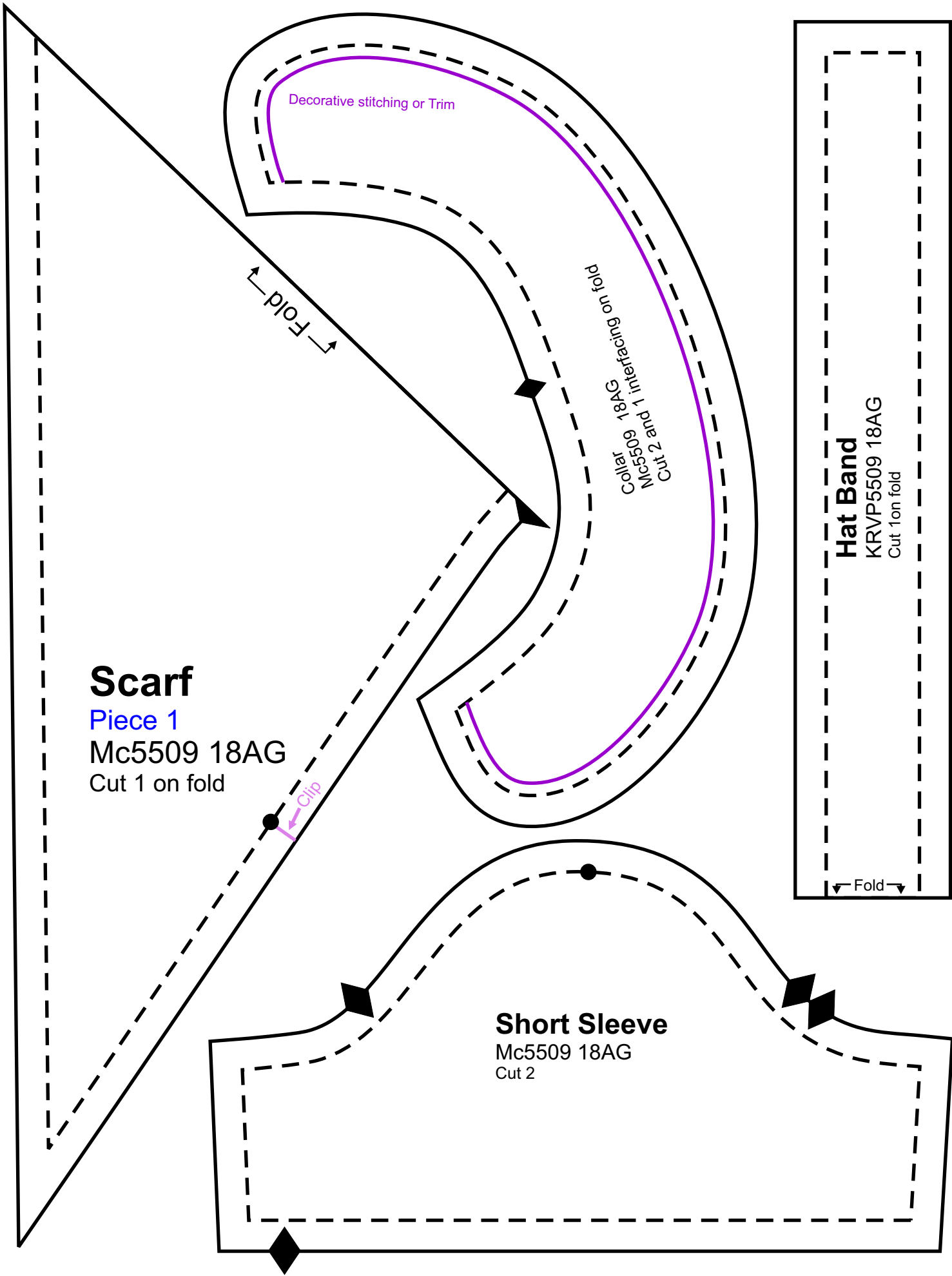
Make sure the scaling setting is set to "none", the standard setting for adobe pdf reader is to scale the page to fit paper. If this is not changed, the patterns will be resized and not correct.

To check size, this box should
be 2"x4" (101.6mm x 50.8mm)









Scarf

Piece 1

Mc5509 18AG

Cut 1 on fold

← Fold →

Decorative stitching or Trim

Collar
Mc5509 18AG
Cut 2 and 1 interfacing on fold

Clip

Short Sleeve

Mc5509 18AG

Cut 2

Hat Band

KRVP5509 18AG

Cut 1 on fold

← Fold →

↑ Fold ↑

Skirt

Piece 1

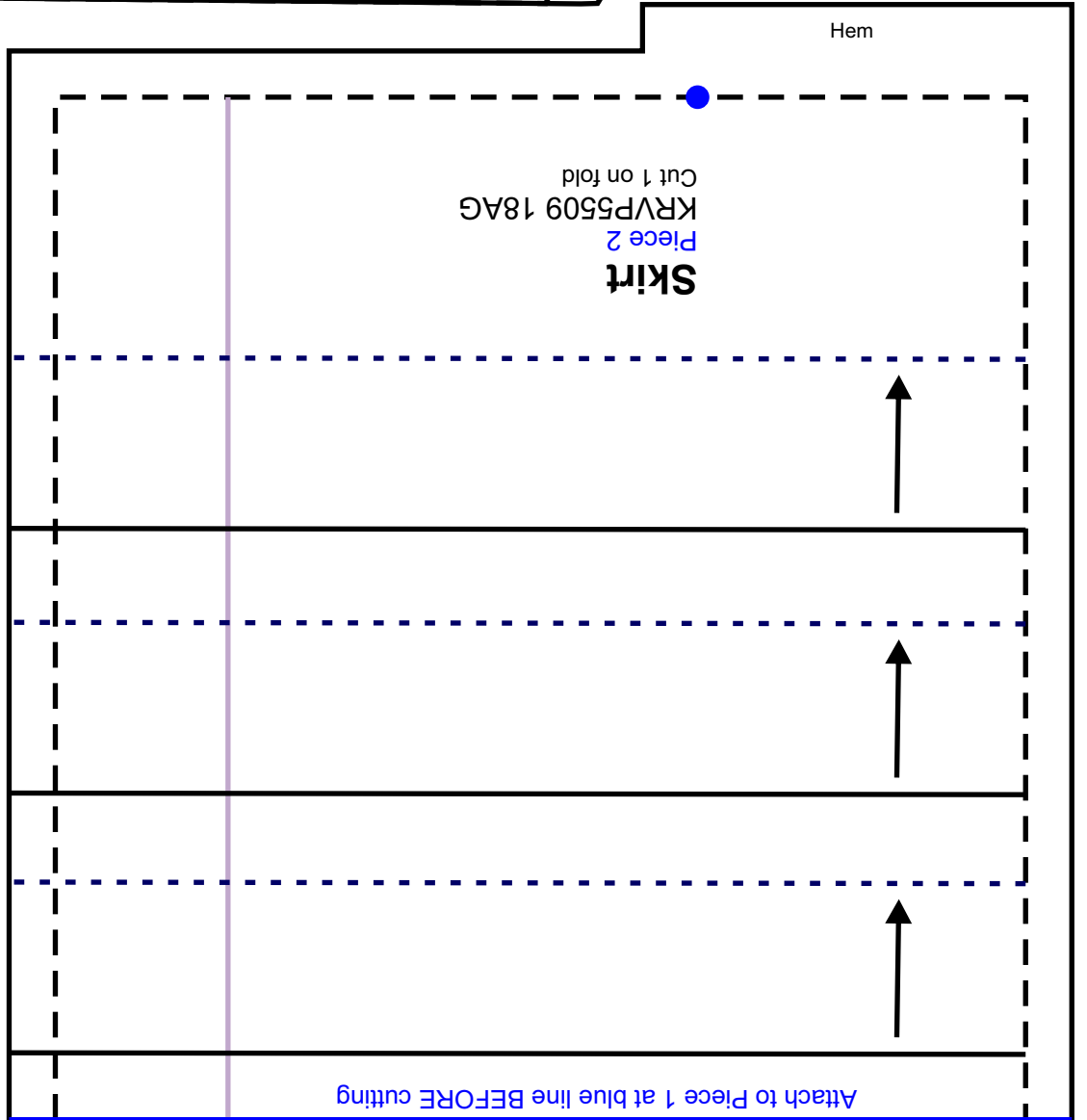
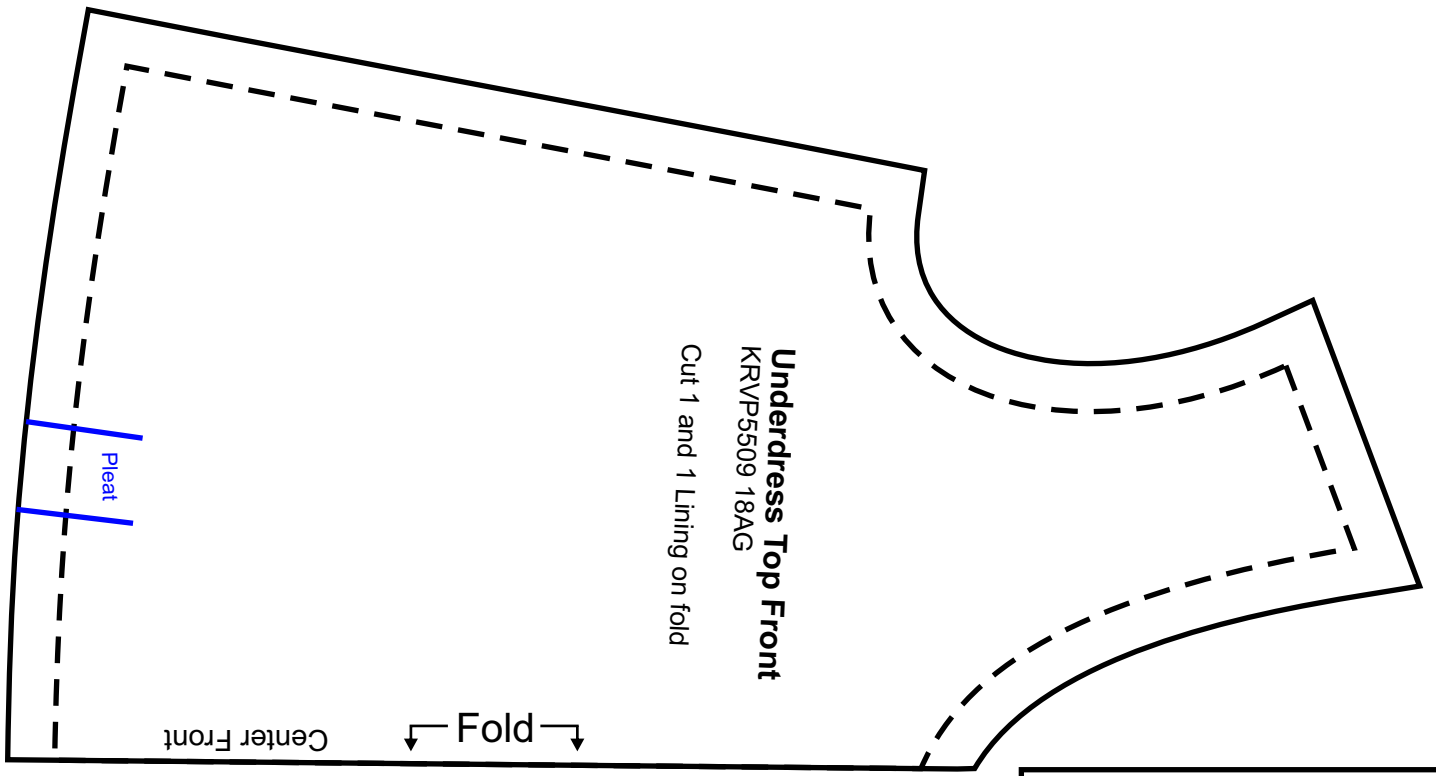
KRVP5509 18AG

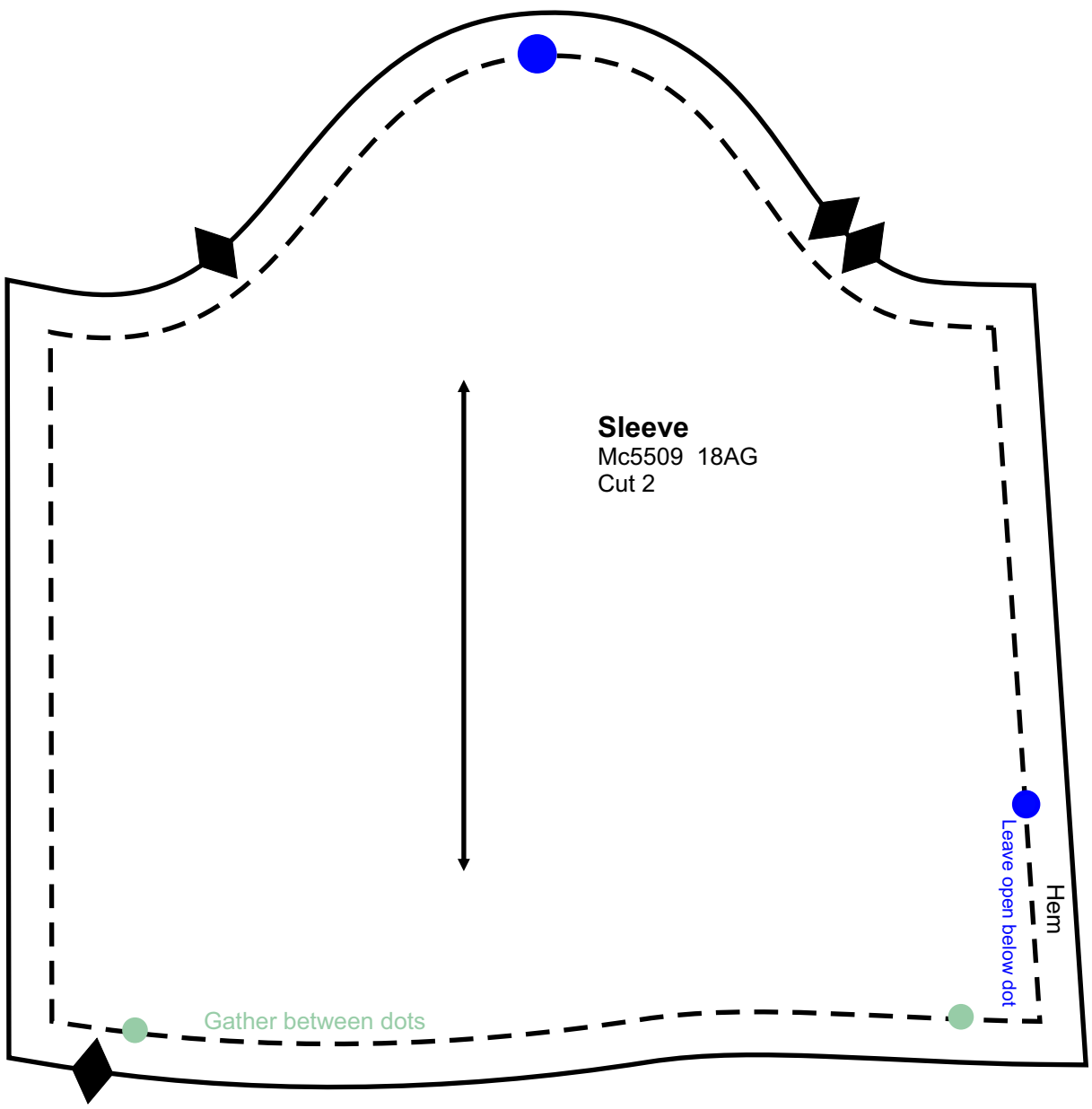
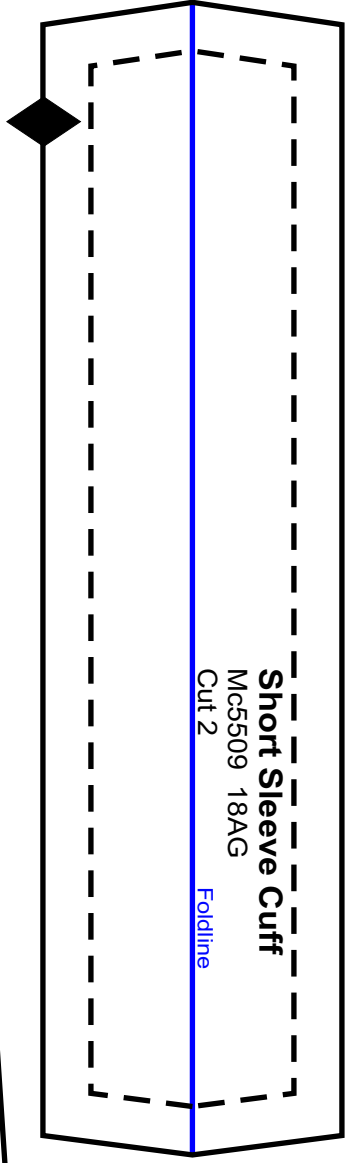
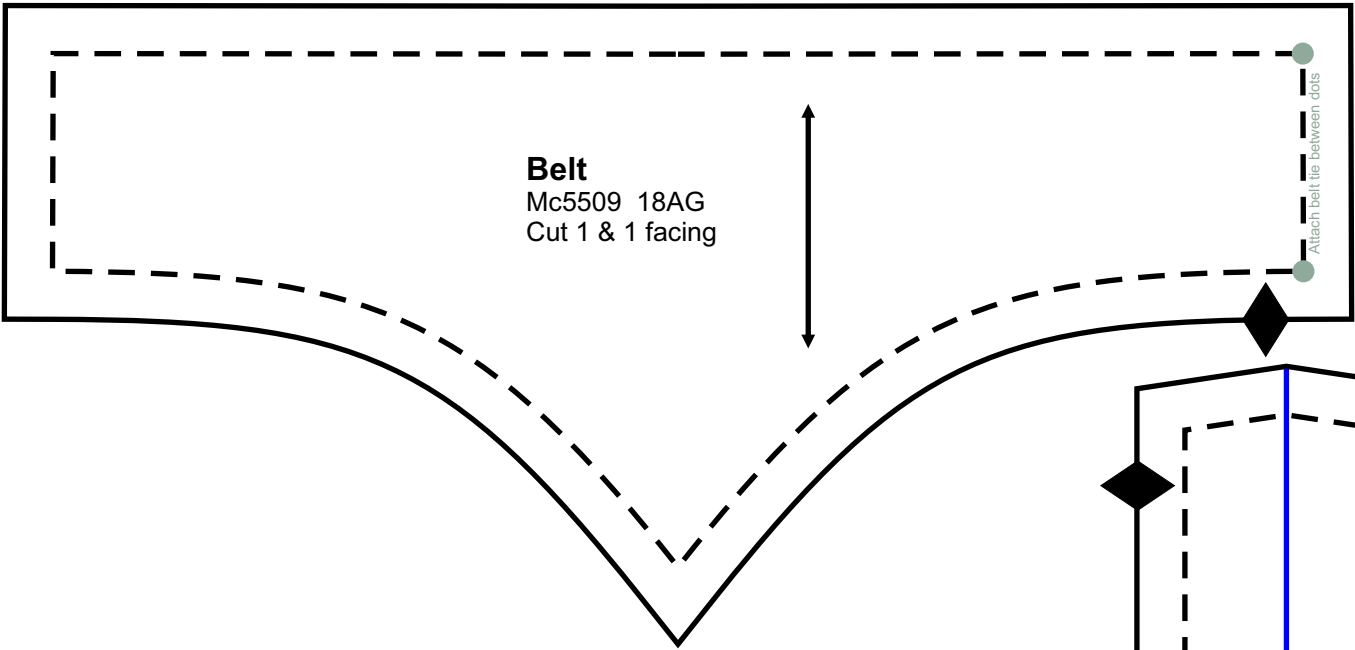
Cut 1 on fold

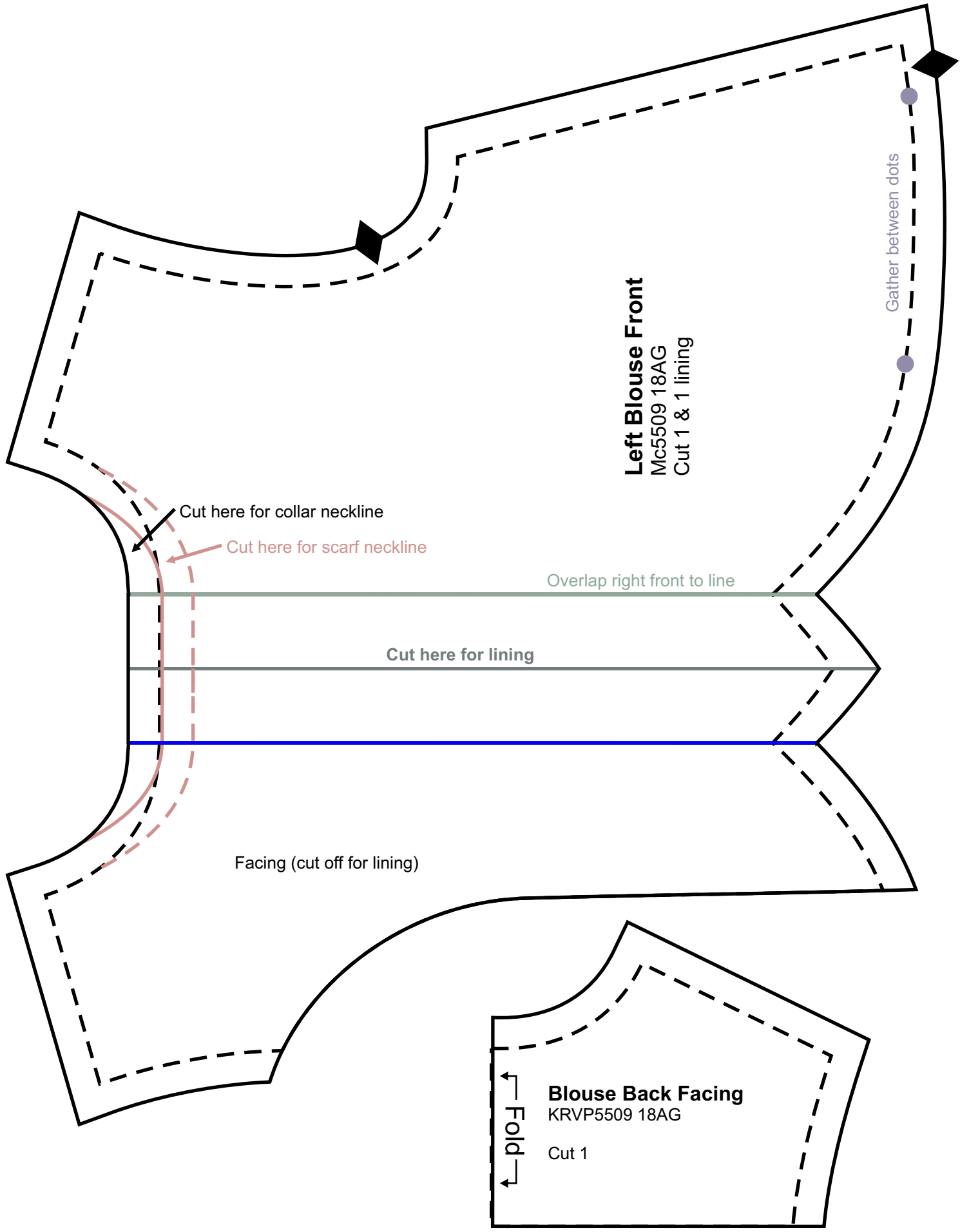


Fold for hem

Attach to Piece 2 at blue line BEFORE cutting







Left Blouse Front
Mc5509 18AG
Cut 1 & 1 lining

Cut here for collar neckline

Cut here for scarf neckline

Overlap right front to line

Cut here for lining

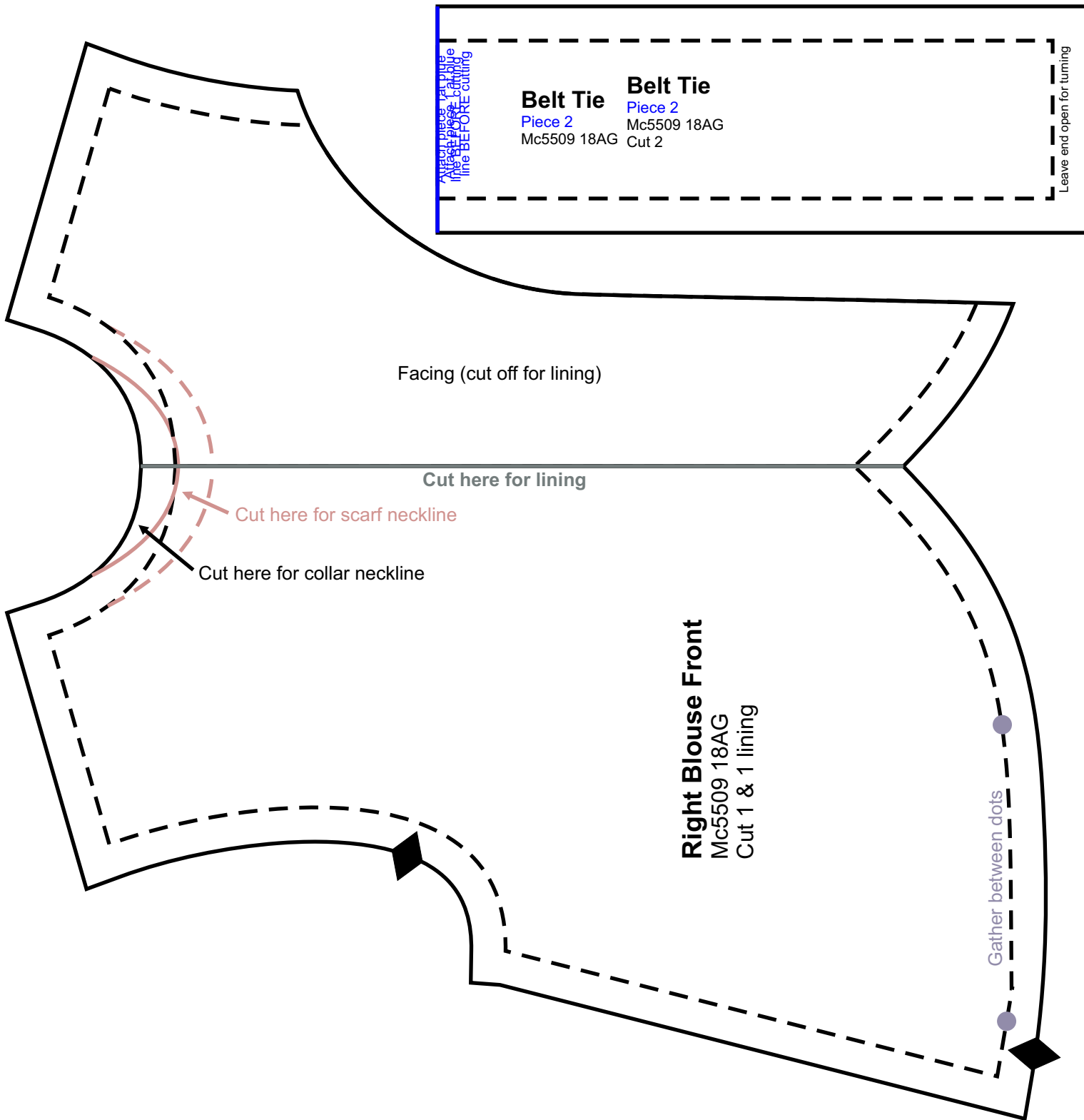
Facing (cut off for lining)

Gather between dots

Blouse Back Facing
KRVP5509 18AG

Cut 1

← Fold →



Belt Tie
Piece 2
Mc5509 18AG
Cut 2

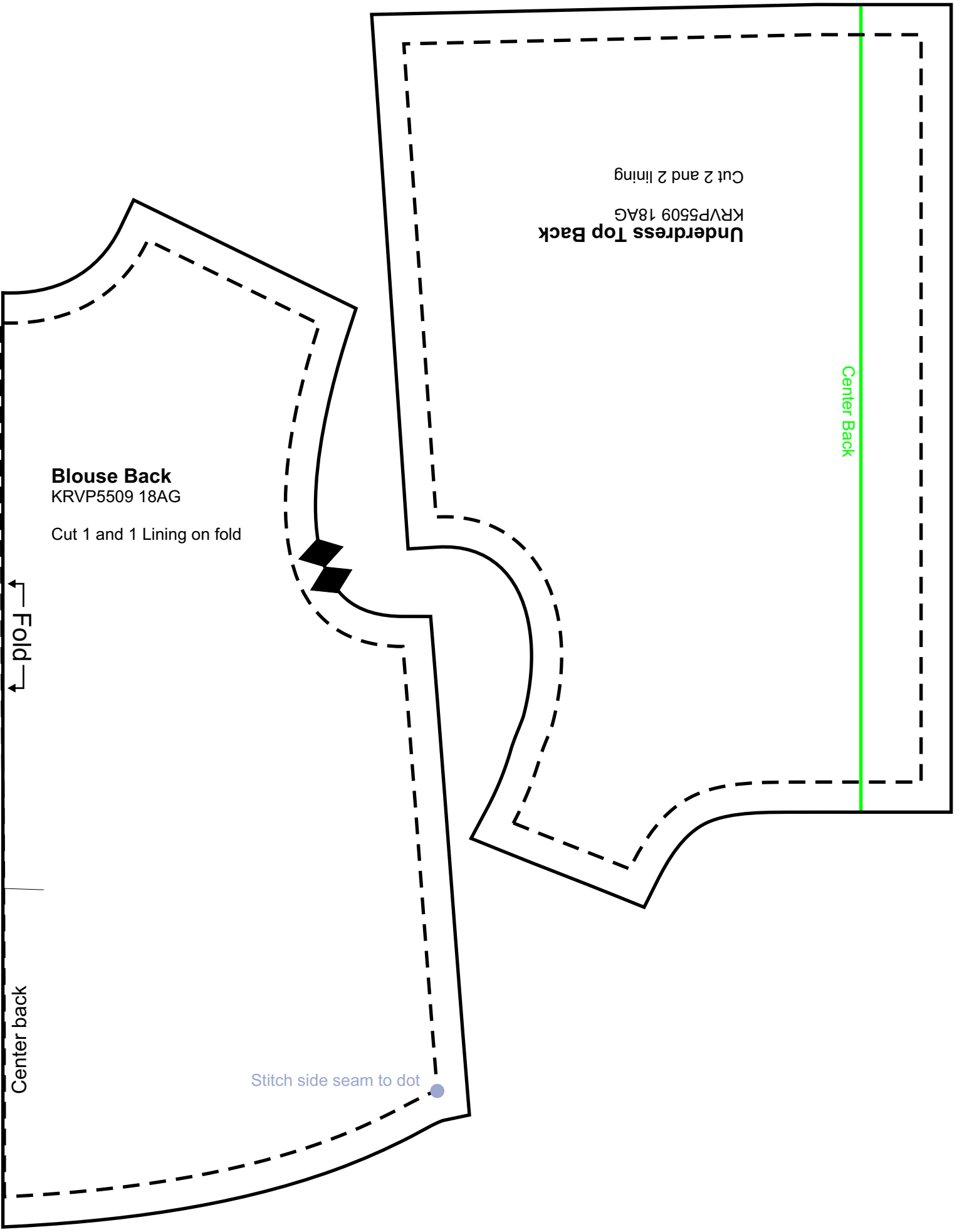
Belt Tie
Piece 2
Mc5509 18AG
Cut 2

Leave end open for turning

Belt Tie
Piece 1
Mc5509 18AG
Cut 2

Cut here for left side →

Attach piece 2 at blue line BEFORE cutting



Underdress Top Back
KRVP5509 18AG
Cut 2 and 2 lining

Center Back

Blouse Back
KRVP5509 18AG

Cut 1 and 1 Lining on fold

Fold

Center back

Stitch side seam to dot